

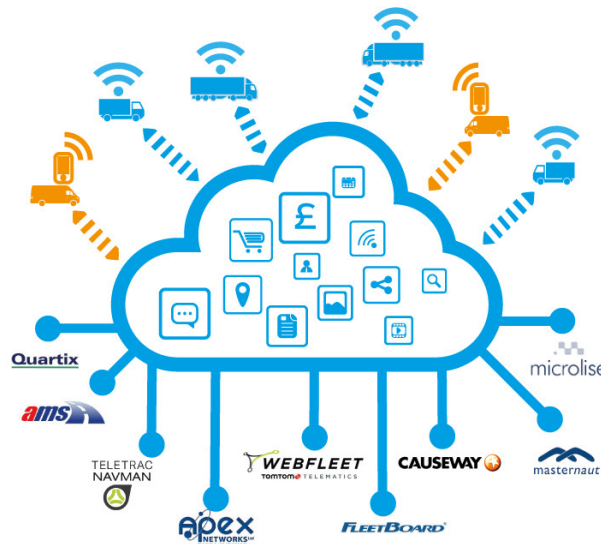
# 10 minutes is all it takes to get your fleet into the Exchange



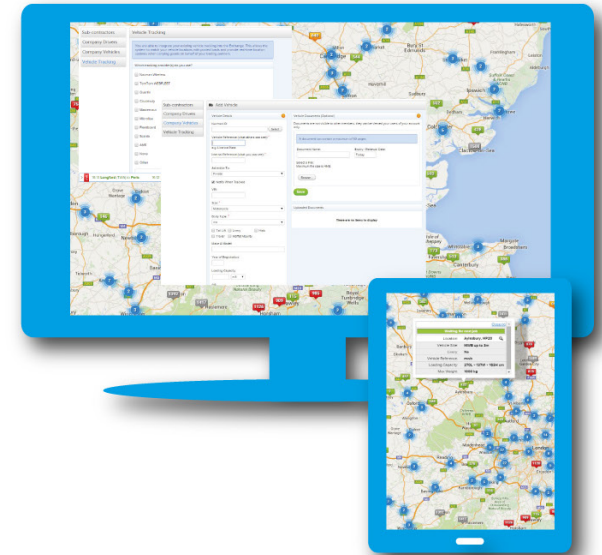
**1.** Tell us which fleet telematics solution you currently have or use our app ...*or both!*



**2.** We've already done all the hard work of integrating with your provider...just sign in.



**3.** Now you're ready to show your available capacity ...to private groups or to the whole market



## Get more from your telematics

Whatever your choice of provider we've made it fast, easy and safe to get more from your investment in telematics. We've already done all the hard work with built-in support for all the major suppliers so it couldn't be easier for you to

raise the profile of your fleet on the Exchange. It typically takes just 10 minutes to get your fleet integrated onto the Exchange and start to receive real-time location updates that allow you to choose exactly how and when your available capacity is advertised.

## No telematics? Don't worry...

...we've an app for that. Whether you have just a single vehicle or a fleet of hundreds, it's quick and easy to use our app to put your available capacity 'on the map'.

The app is easy to use and is a great

way of using live vehicle locations to generate new business, whether or not you have telematics. It works with all popular Apple and Android smartphones and tablets and comes complete with great features like secure messaging, POD support and much more.

